



reddot award 2019
winner



Plial® CWS

Aluminium stackable roller
shutter for corner windows





Plial® CWS

Plial® CWS (Corner Window Solution) is designed specifically for the darkening of corner windows

1

COMPACT AND FUNCTIONAL

Compared to conventional roller shutters, the 2 slats or 3 slats stacking system ensure optimal use of the lintel space.

2

LOW VISUAL IMPACT OF THE MIDDLE MOUNTING PROFILE FOR SIDE GUIDE RAILS

Thanks to the self-supporting side guide rails, the lateral space that would otherwise be required to accommodate the two adjacent roller brackets is not necessary. In this way the gap between the two central side guides can be eliminated, thus reducing space requirements.

3

FLAT SHUTTER CURTAIN SURFACE

Thanks to the special straight slat geometry, the roller shutter keeps in harmony with the building façade, removing any curved surface.

4

CARE OF THE DETAILS

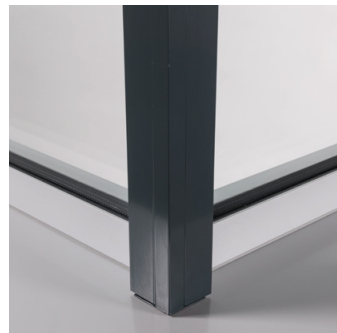
The design and assembly of the middle profile hides any fastening elements.

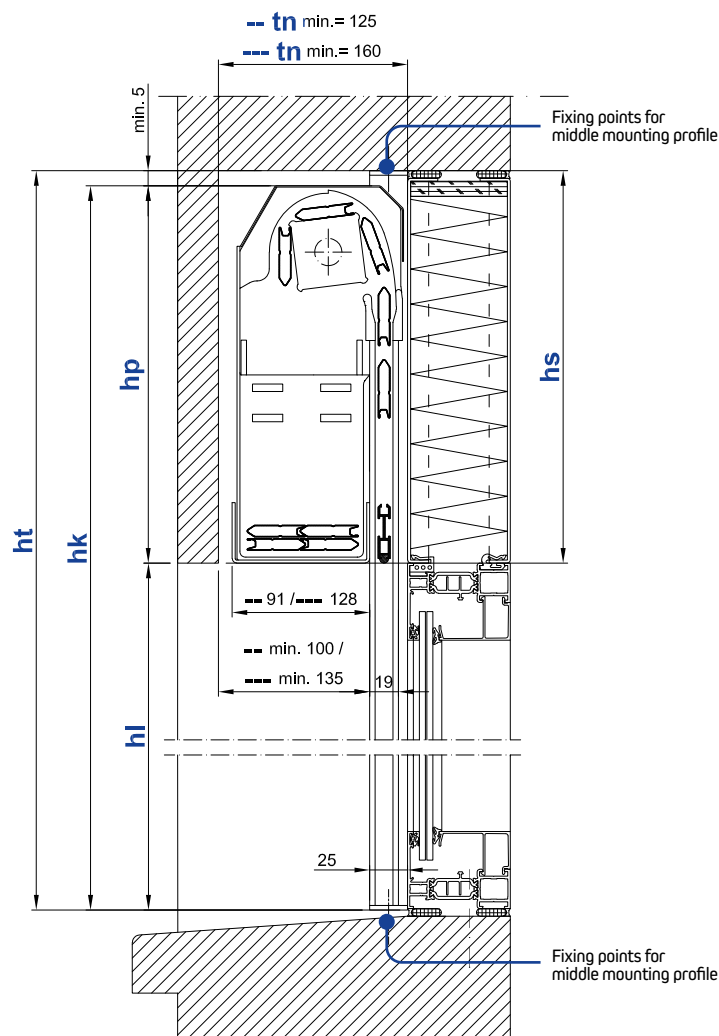
5

AWARD-WINNING, INNOVATIVE AND QUALITY DESIGN

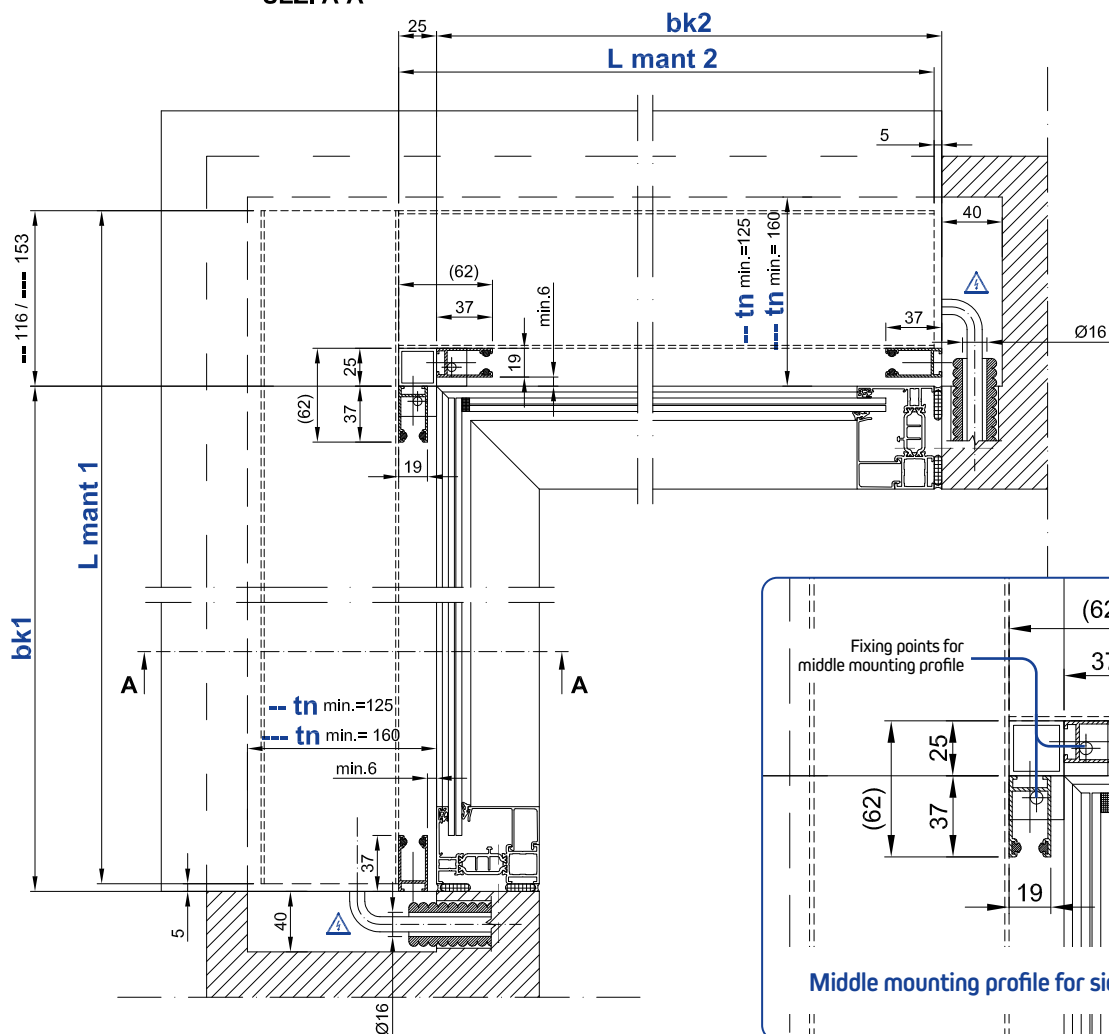
Product winner of the prestigious international design competition [Red Dot Award 2019](#).

Made in Switzerland





SEZ. A-A



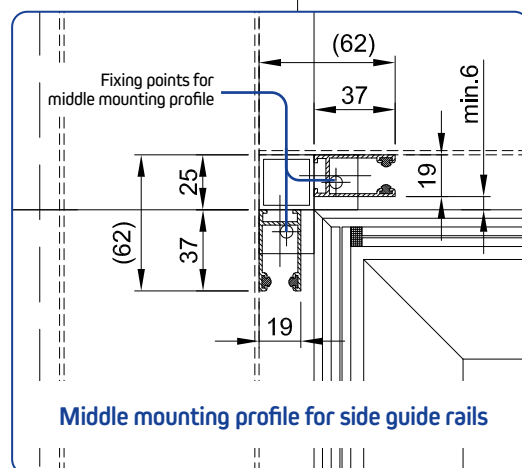
Legend

- 1 roller shutter 1
- 2 roller shutter 2
- bk width of construction
- hl opening height
- hk installation height ($hl + hp$)
- ht total height ($hl + hs$)
- hs lintel height
- hp package height
- tn lintel depth
- l_{mant} length of bottom cover
- [- -] two-slats version
- [- - -] three-slats version

Length of bottom covers

- [- -] $L_{mant 1} = bk1 + 111$
- $L_{mant 2} = bk2 + 20$

- [- - -] $L_{mant 1} = bk1 + 148$
- $L_{mant 2} = bk2 + 20$



Middle mounting profile for side guide rails

Technical data

Maximum installation height (hk) 3'000 mm

Maximum opening height (hl) [- -] 2'560 mm
[- - -] 2'650 mm

Minimum opening height (hl) 400 mm

Width of construction (bk) ⁽¹⁾

- minimum with motor 570 mm
- minimum with radio motor 660 mm
- maximum 2'700 mm

Maximum surface area (bk x hk) ⁽¹⁾

- single shutter curtain 7 m²
- coupled shutter curtains 10 m²

Shutter curtain unfolding only inwards
Drive type motor, independent

Coupled shutter curtains ⁽¹⁾

- number of shutter curtains that can be coupled with a single drive 2 o 3 teli
- middle control side not possible

Weight per m² ⁽¹⁾ approx. 3,5 kg

Optional on request

- Sheet metal top cover
- Special colours and imitation wood
- Powder coated side guide rails, bottom bar and stop brackets
- Obstacle detection motors and bidirectional radio motors
- Bottom cover with a height of 100mm ⁽³⁾
- Bottom bar stopper for side guide rails

Wind load resistance

MINERGIE

Width of construction (bk)	1'000	1'500	2'000	2'700
Class	6	6	5	4

Wind load resistance in conformity with VSR technical guidelines (Association of Swiss sun protection and weather suppliers)

Class	0	1	2	3	4	5	6
Wind [m/s]	<9.0	<9.0	11	13	17	21	26
Wind [km/h]	32	32	39	46	60	76	92

Minimum lintel dimensions [- -]													
tn	125 mm												
hl	880	940	1'040	1'135	1'195	1'295	1'390	1'450	1'550	1'645	1'705	1'765	>>
hp ⁽²⁾	230	240	250	260	270	280	290	300	310	320	330	340	

hl	1860	1'920	2'050	2'110	2'200	2'300	2'395	2'455	2'515	2'560
hp ⁽²⁾	350	360	370	380	390	400	410	420	430	440

Minimum lintel dimensions [- - -]													
tn	160 mm												
hl	1'270	1'330	1'460	1'555	1'685	1'780	1'875	2'075	2'100	2'300	2'500	2'525	2'650
hp ⁽²⁾	230	240	250	260	270	280	290	300	310	320	330	340	350

Two-slats version [- -] Three-slats version [- - -] hp = package height tn = lintel depth

⁽¹⁾ Data refer to the single roller shutter.

⁽²⁾ The minimum package height hp includes a tolerance of 5 mm to compensate wall errors. In case of intermediate dimensions, use the next higher hp dimension.

⁽³⁾ Standard from bk width of 2000mm.