

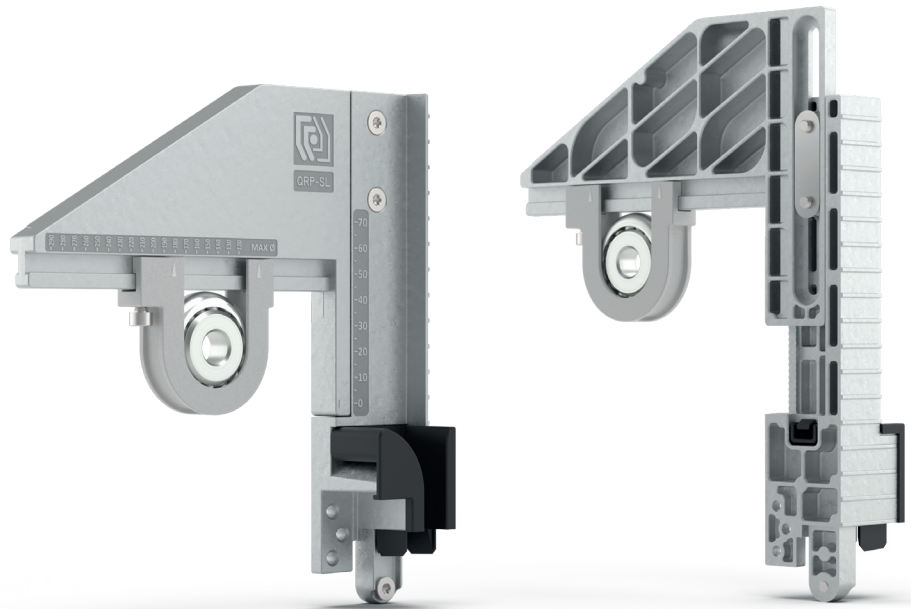
## QuickRoll® Plus

The evolution of self-supporting system, for fast and safe installation compatible with any type of roller shutter



QuickRoll® Plus is the definitive self-supporting system, equipped with unparalleled technical features, designed to meet the highest requirements of the roller shutter industry.

Winner of the prestigious international IF Design Award.



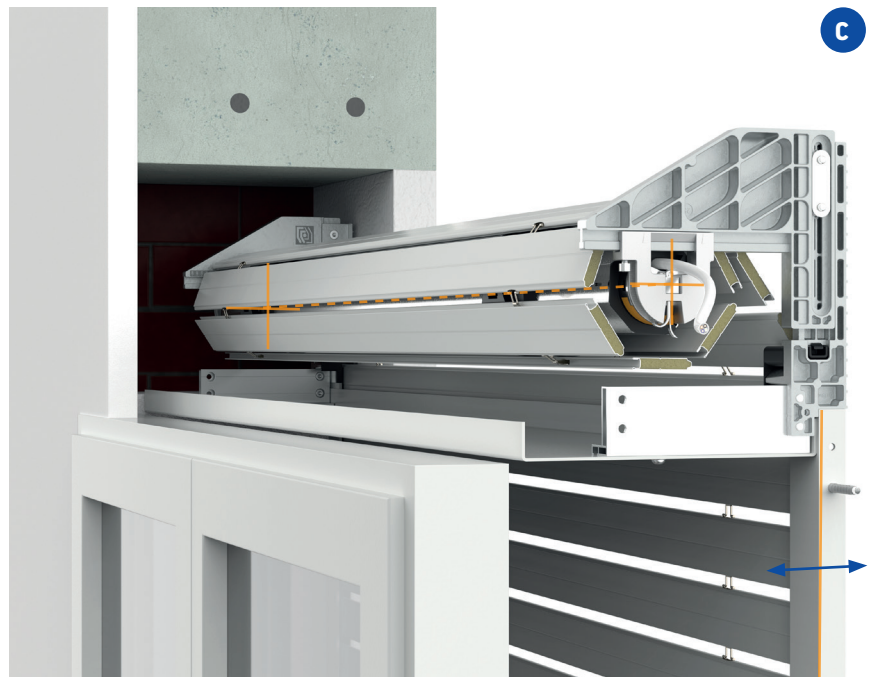
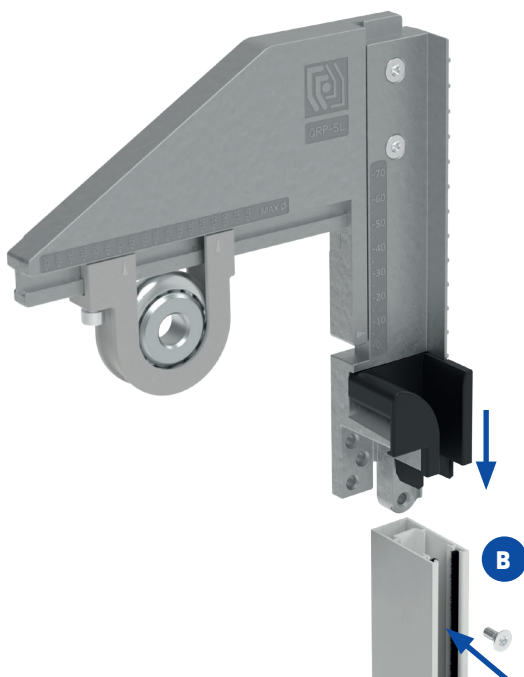
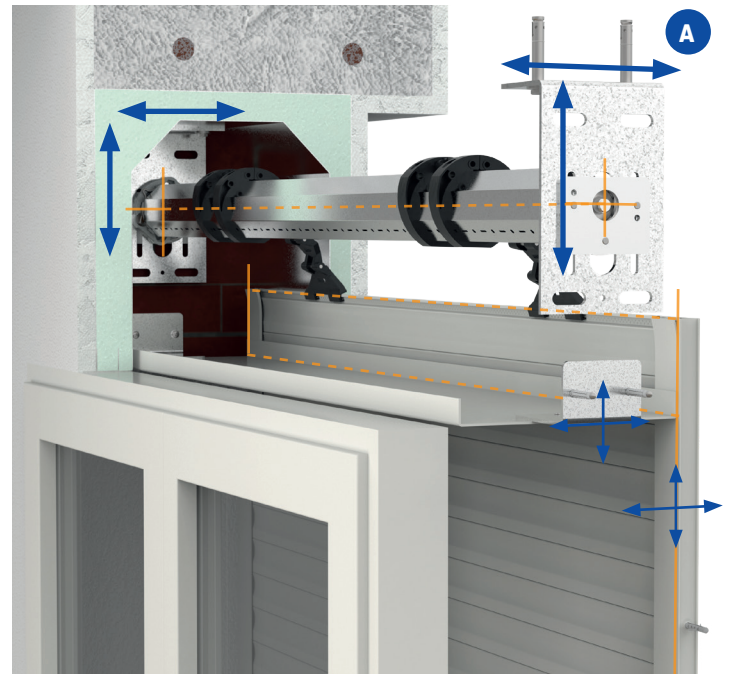
## 1 FASTER INSTALLATION THAN EVER BEFORE

Save up to 20 minutes when installing a single roller shutter.

Thanks to **QuickRoll® Plus**, all **pre-installation operations** for the brackets inside the shutter box, **typical of traditional systems A**, **are removed**, such as positioning measurements, additional drilling for fixing the brackets, and various adjustments depending on the situation.

With **QuickRoll® Plus** the brackets are **securely attached directly to the side guide rails B** and only the side guide rails need to be positioned and fixed to the window **C**.

The brackets are **completely pre-assembled in the workshop** and already fixed to their respective side guide rails, further reducing installation time on the building site. If necessary, the **brackets can be easily mounted and dismantled even when the side guide rails are already fixed** to the window.

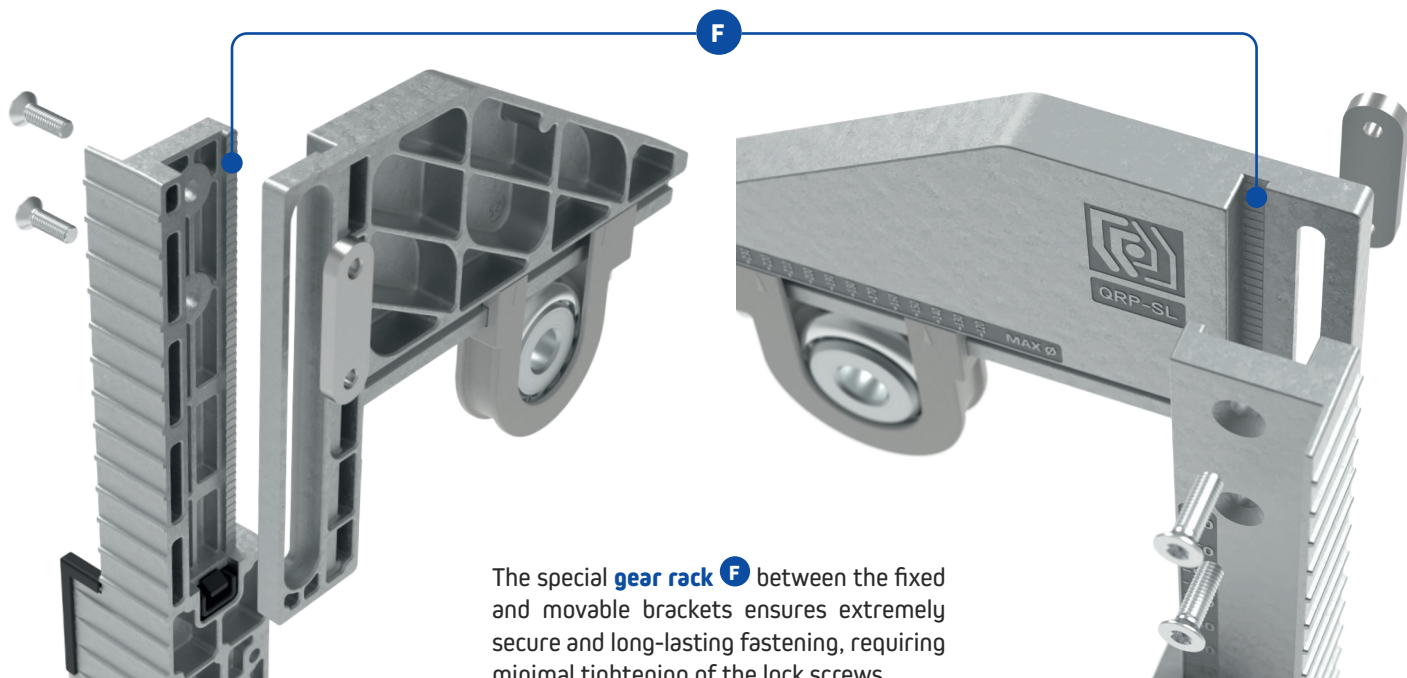
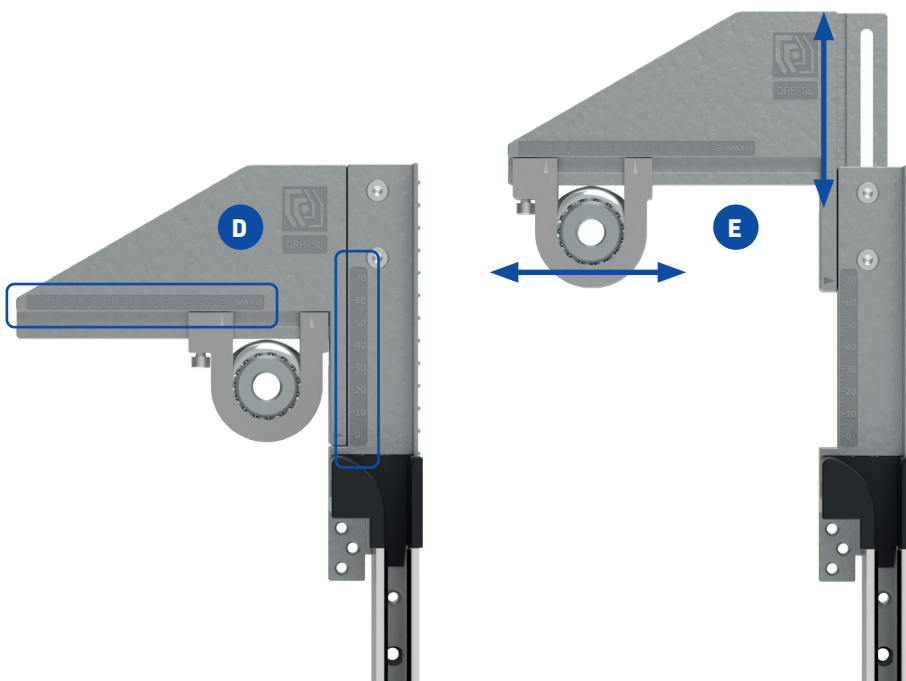


## 2 SIMPLIFIED ADJUSTMENT

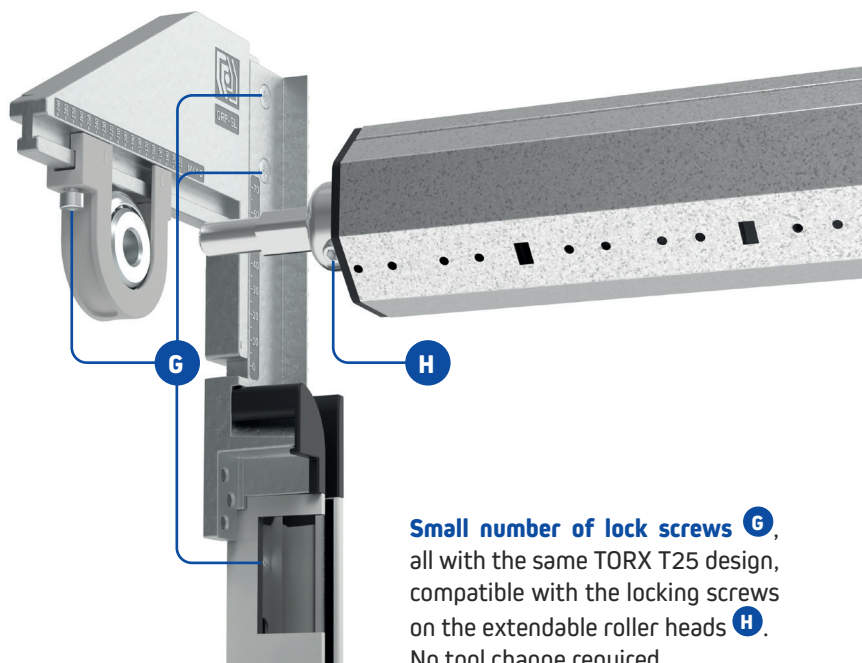
You can say goodbye to your tape measure and the thousand tools you have to store in your pocket.

The **graduated scales (horizontal and vertical)** **D** eliminates the need for any measurement operations to align the brackets with each other. It is also possible to adjust the relative position of the roller before installing the guides, thus operating in more comfortable working conditions and in a series.

The **adjustment movements are independent of each other** **E** : this means that any positioning errors of the side guide rails can always be corrected in a targeted manner, or inevitable masonry defects can be compensated for, ensuring professional installation.



The special **gear rack** **F** between the fixed and movable brackets ensures extremely secure and long-lasting fastening, requiring minimal tightening of the lock screws.

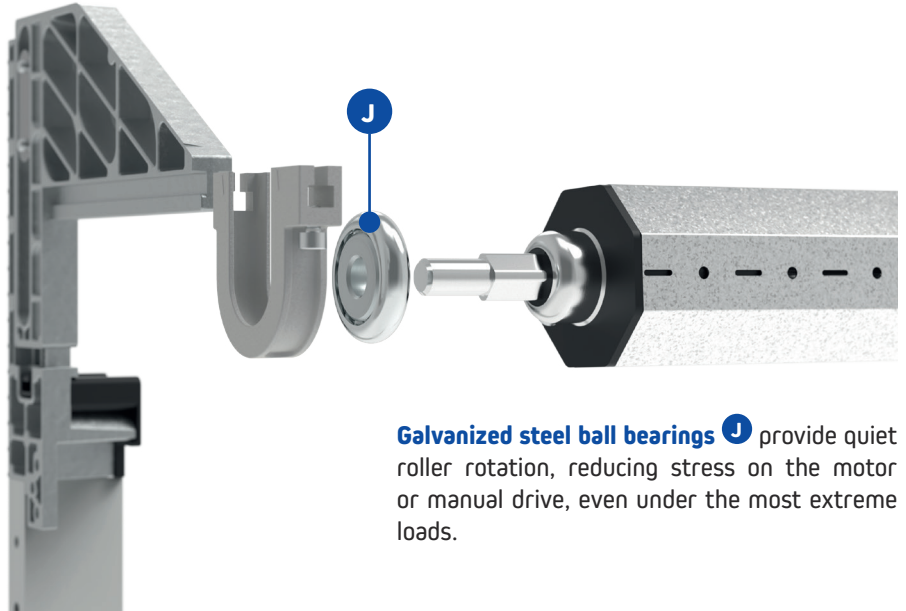
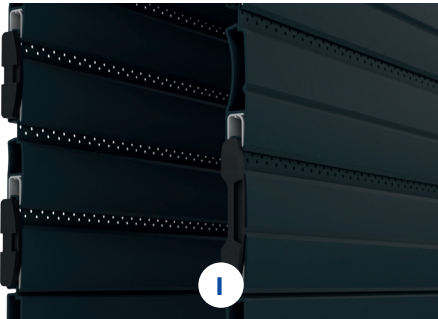


**Small number of lock screws** **G**, all with the same TORX T25 design, compatible with the locking screws on the extendable roller heads **H**. No tool change required.

**3** MAXIMUM COMPATIBILITY AND INSTALLATION VERSATILITY

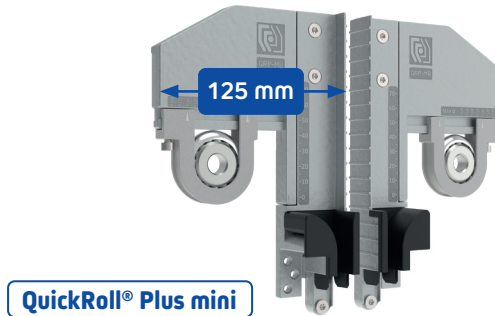
Up to 90 kg maximum load capacity <sup>(1)</sup>.

QuickRoll® Plus is compatible with a wide range of roller shutters on the market, both for lightweight profiled slats and heavier security shutters, such as our Regasicur® **I**.

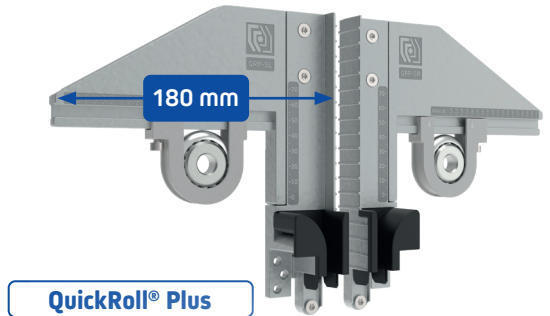


Galvanized steel ball bearings **J** provide quiet roller rotation, reducing stress on the motor or manual drive, even under the most extreme loads.

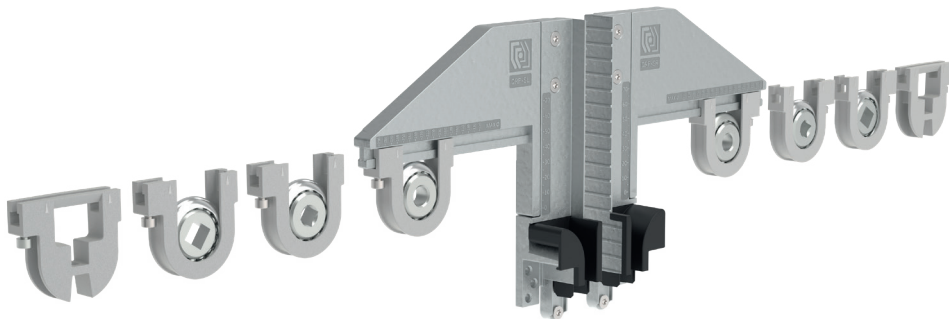
Thanks to its smaller dimensions, the QuickRoll® Plus mini variant fits perfectly into smaller shutter boxes or niches.



QuickRoll® Plus mini



QuickRoll® Plus

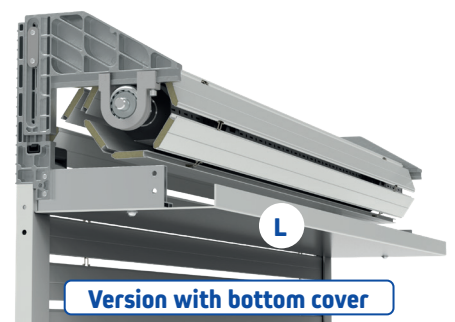


The modular brackets allow for up to 12 different bracket-side guide rail combinations, fitting the most common roller components on the market.

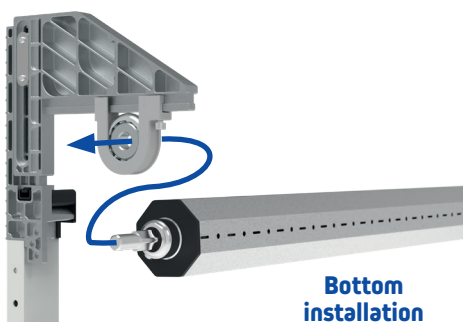
The lower fixing points **K** allow the bottom cover to be mounted directly with its brackets **L** (optional), thus adapting to different architectural solutions, such as niches with bottom inspection.



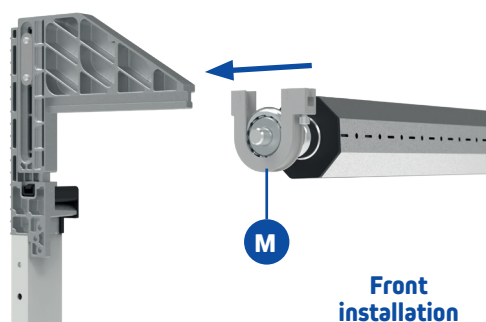
Version for traditional shutter box



Version with bottom cover



Bottom installation

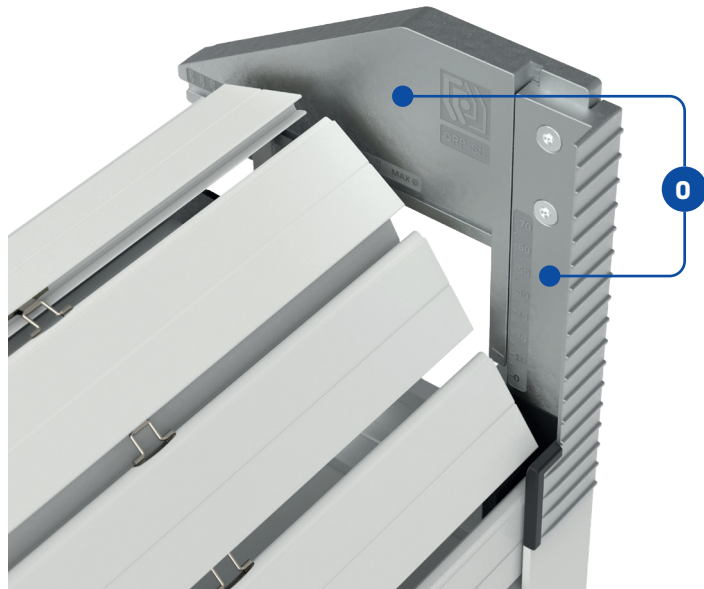
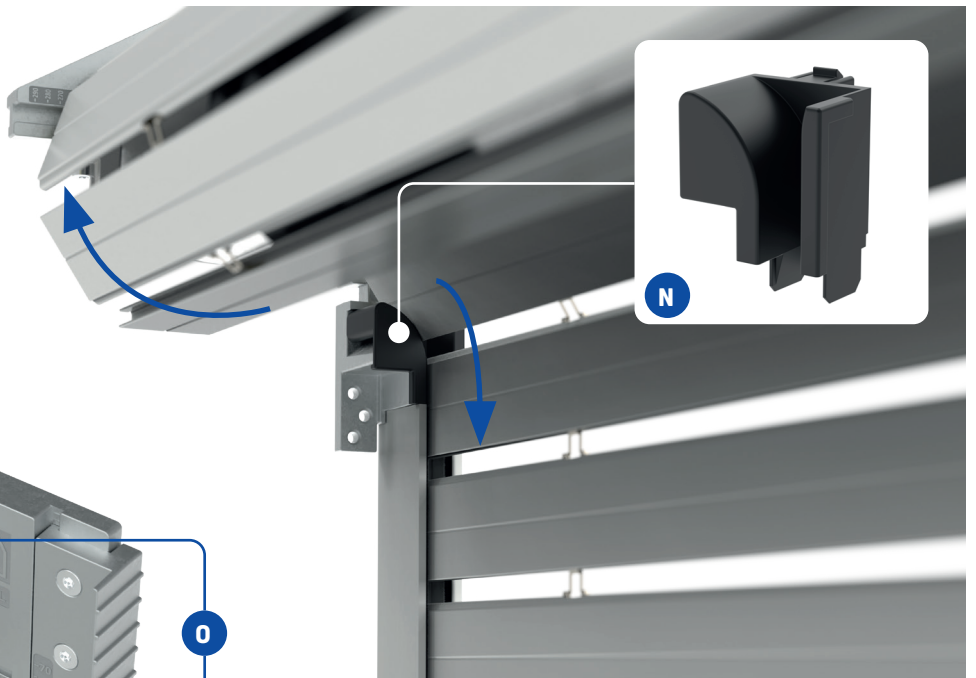


Front installation

The removable sliding supports **M** allow the roller to be installed and removed in two ways: from the bottom (typical installation) or from the front. The last one is also very useful in more critical cases, such as motor breakdowns, allowing the roller to be removed with the shutter curtain still wrapped around it.

#### 4 EXTENDED SERVICE LIFE OF THE ROLLER SHUTTER

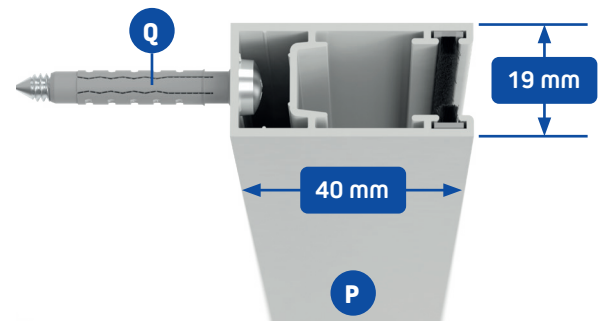
The brackets are equipped with a **slide made of a special self-lubricating plastic material N** that significantly reduces wear on the roller shutter over time caused by continuous friction with the side guide rails inlet. At the same time, the slide **prevents possible damage to the roller shutter** caused by possible jamming on the upper ends of the side guide rails.



The perfectly **flat inner surface O** of the brackets, free of overhangs, also avoids any jamming of the roller shutter during operation.

**Reinforced double-chamber side guide rails P**: the shutter curtain sliding area is independent from the area where the side guide fixing screws are located, thus preventing possible jamming of the shutter curtain and consequent damage.

With a dedicated fixing chamber, the guide allows the use of **larger screws and anchors Q** for a more robust and secure anchorage.

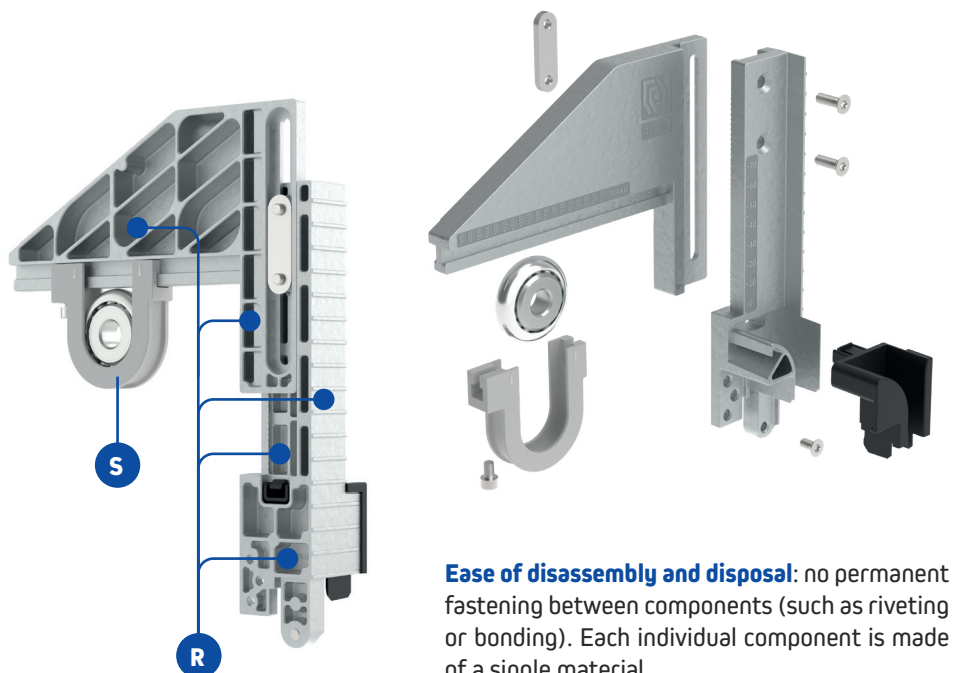


#### 5 ENVIRONMENTAL SUSTAINABILITY

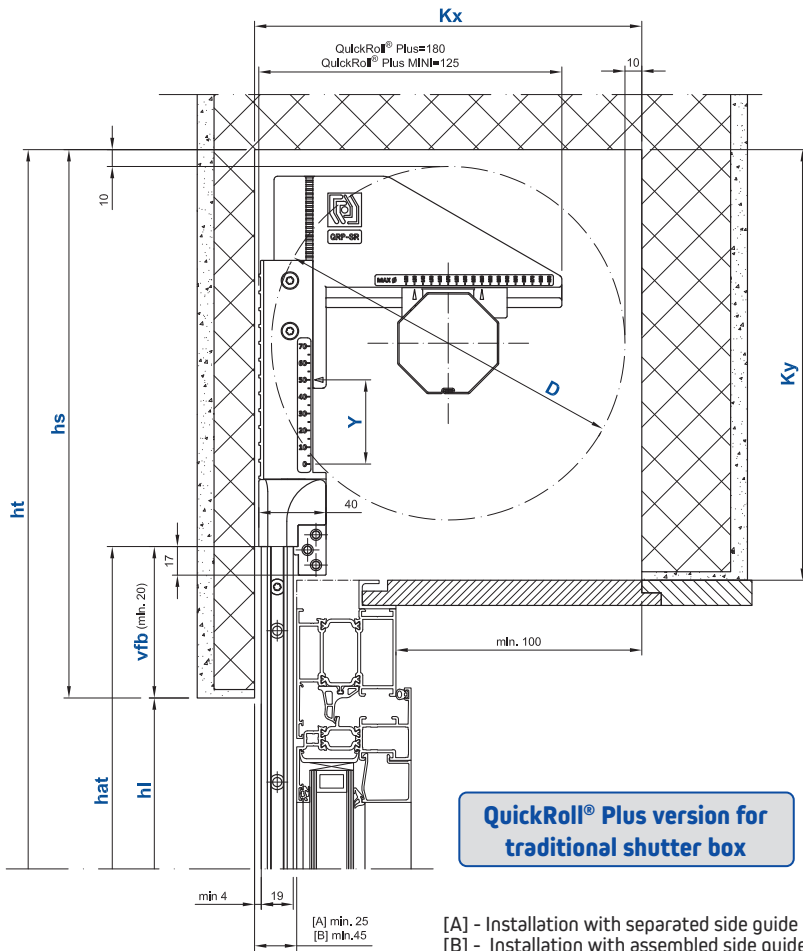
**Reduction in the amount of material used R**: the special rear geometry is the result of complex computerized analyses that have made it possible to lighten the components while **maximizing their rigidity**. Weighing only 570 g each (in the QuickRoll® Plus version), the brackets are able to support a maximum total load of 90 kg <sup>(1)</sup>.

**Reduction in the number of custom-designed components S**: the sliding supports **S** have been designed to adapt to roller components already available on the market.

**97% of the components are manufactured using highly recyclable, long-lasting materials** (aluminum alloys, zinc alloys, and steel).



**Ease of disassembly and disposal**: no permanent fastening between components (such as riveting or bonding). Each individual component is made of a single material.



**QuickRoll® Plus version for traditional shutter box**

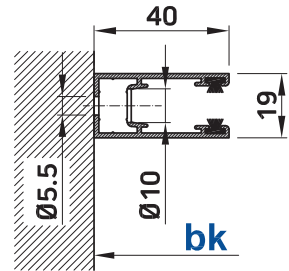
[A] - Installation with separated side guide rail and brackets  
 [B] - Installation with assembled side guide rail and brackets

## Legend

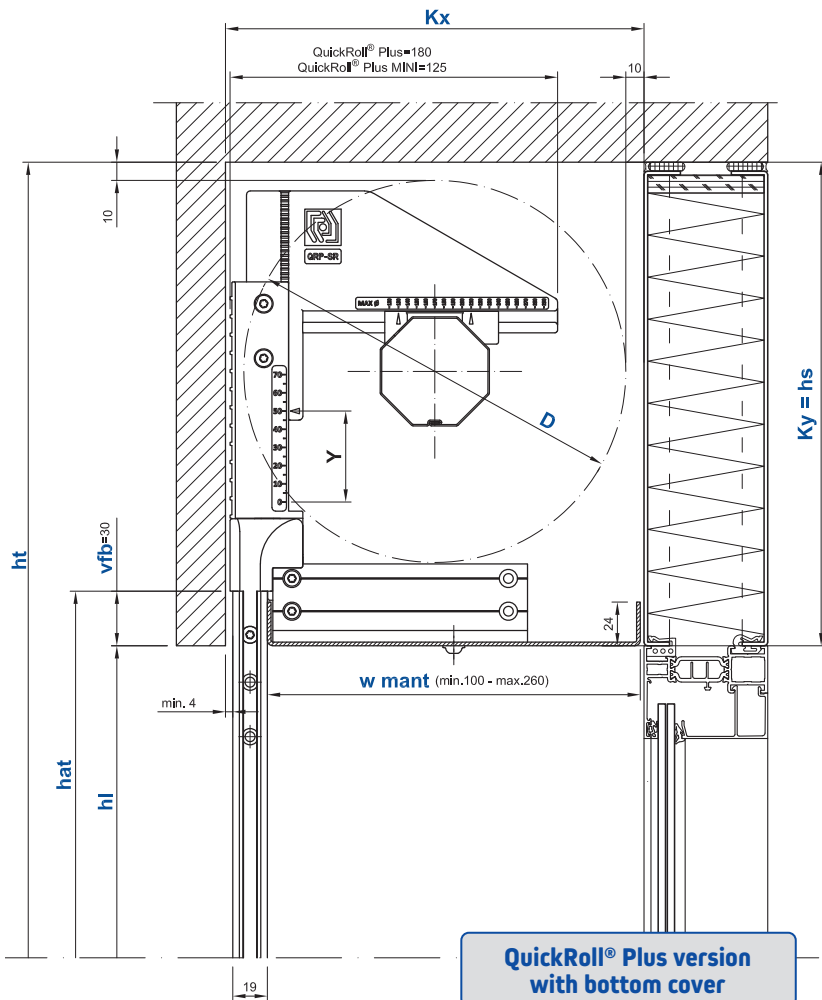
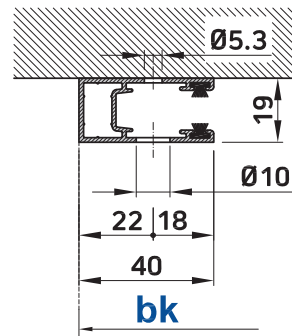
- bk** width of construction
- hl** opening height
- vfb** extension of side guide rails and shutter curtain
- D** winding outer diameter
- Kx** minimum inner shutter box depth
- Ky** minimum inner shutter box height
- hs** minimum lintel height
- Y** vertical roller adjustment
- hat** total length of side guide rails ( $hat = hl + vfb$ )
- haf** length of fixed section of the side guide rails with sliding arm
- hap** length of movable section of the side guide rails with sliding arm
- w mant** width of bottom cover

**QRP side guide rail**

Standard drilling

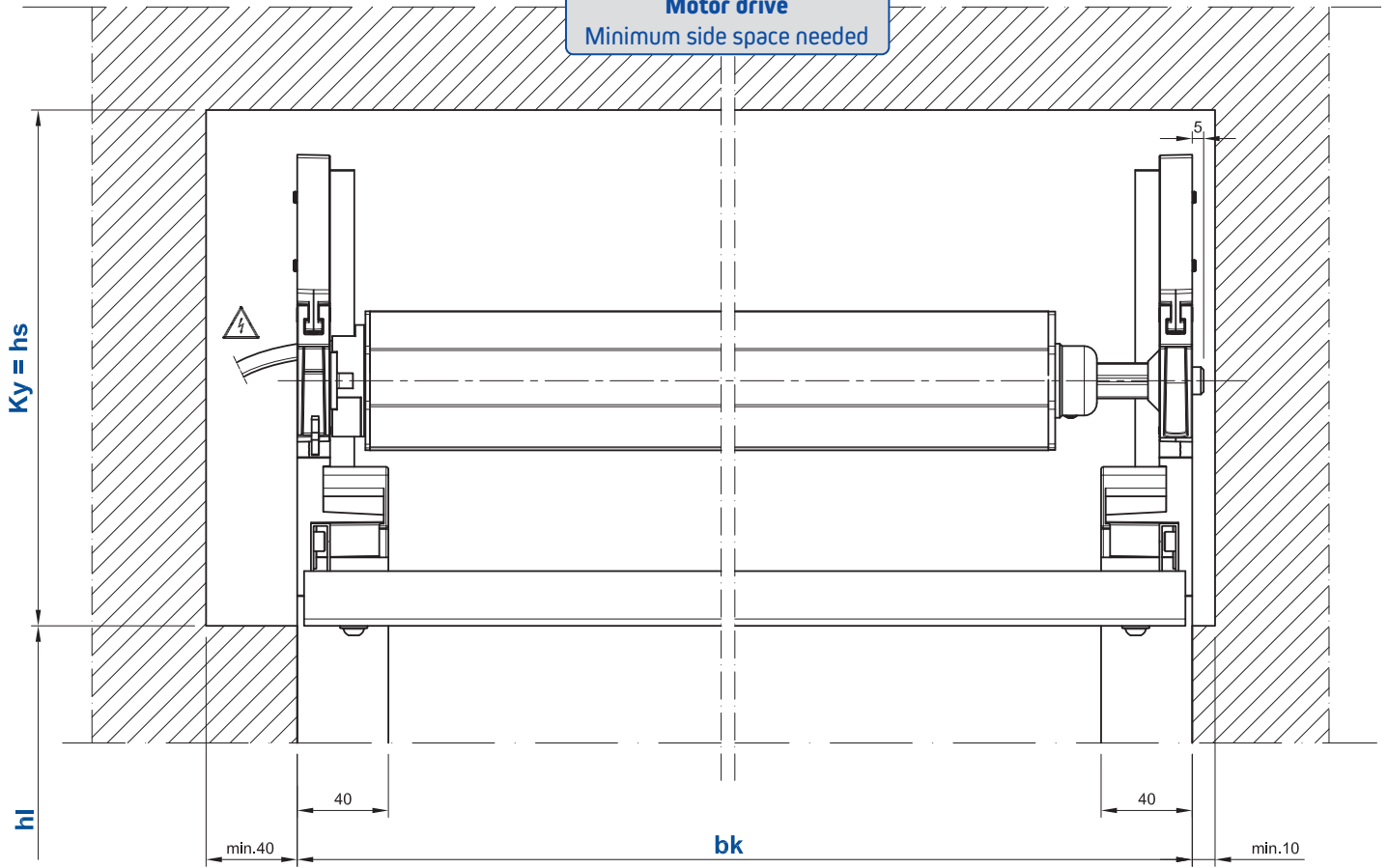


Frontal drilling

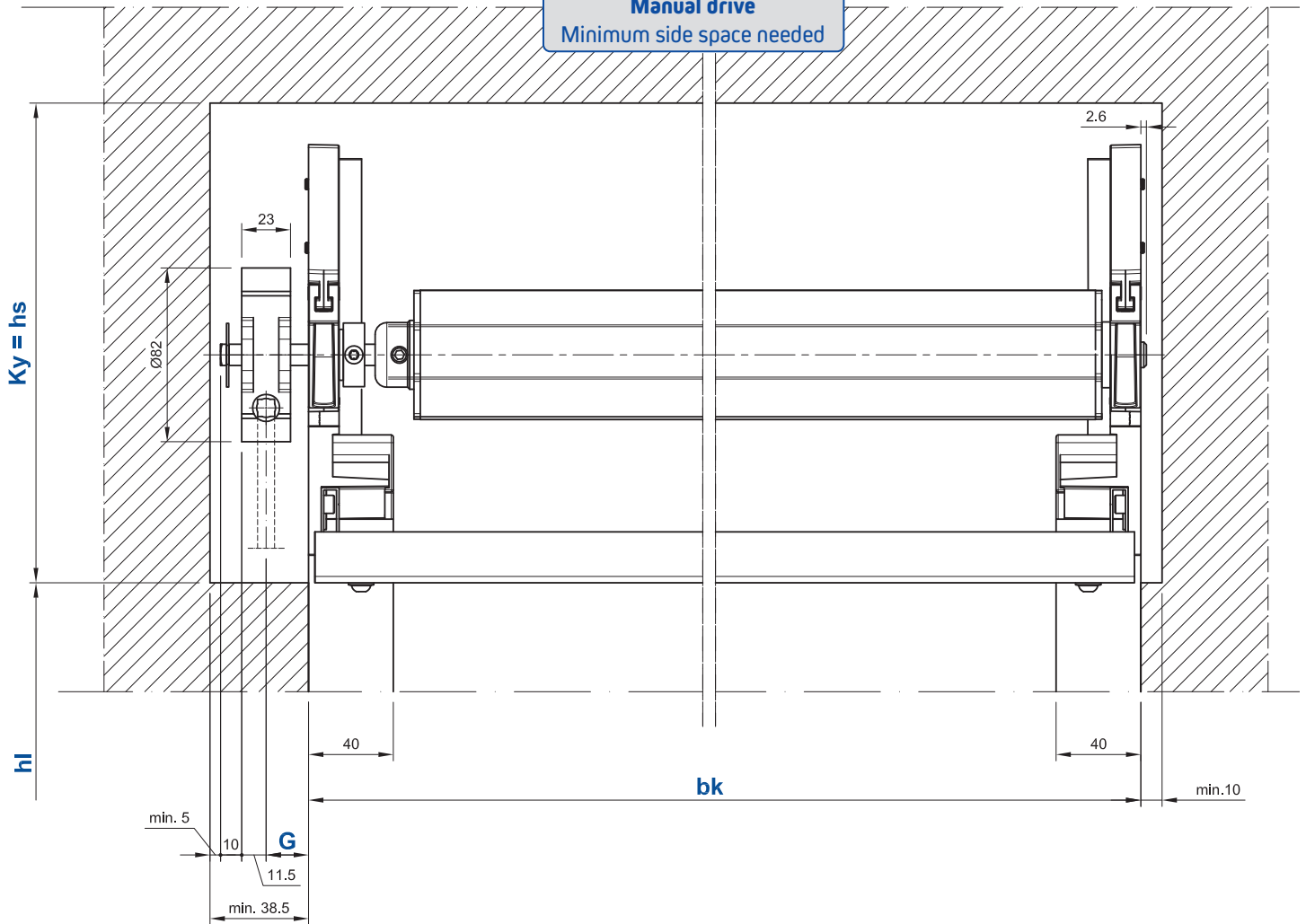


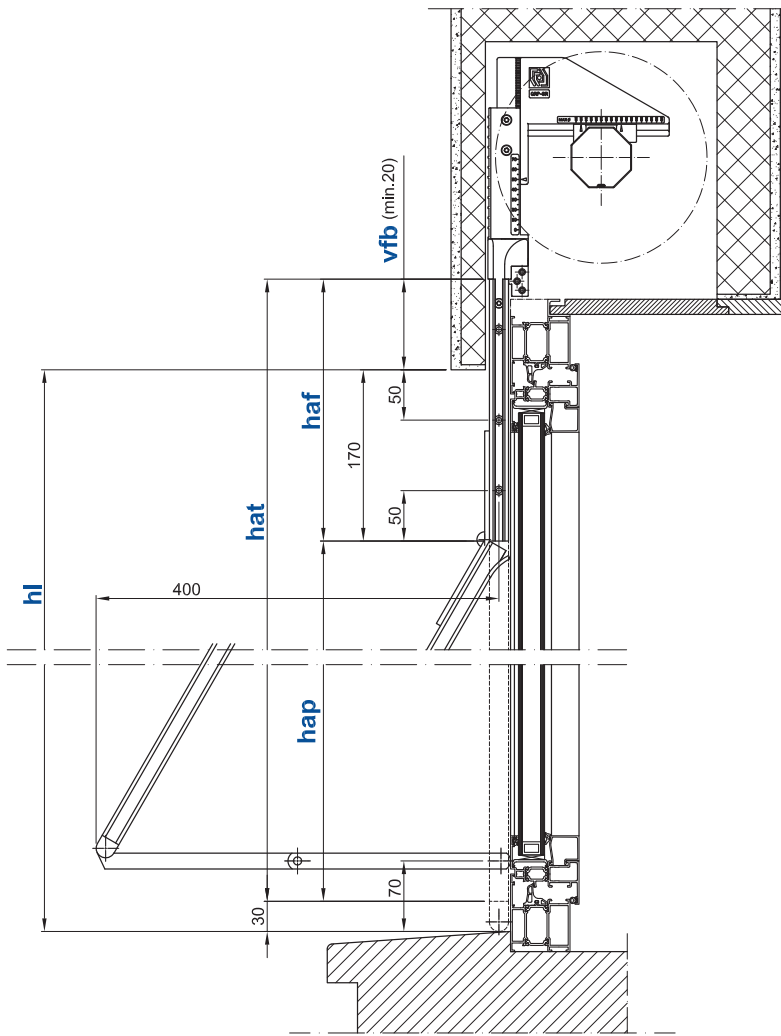
**QuickRoll® Plus version with bottom cover**

**Motor drive**  
Minimum side space needed

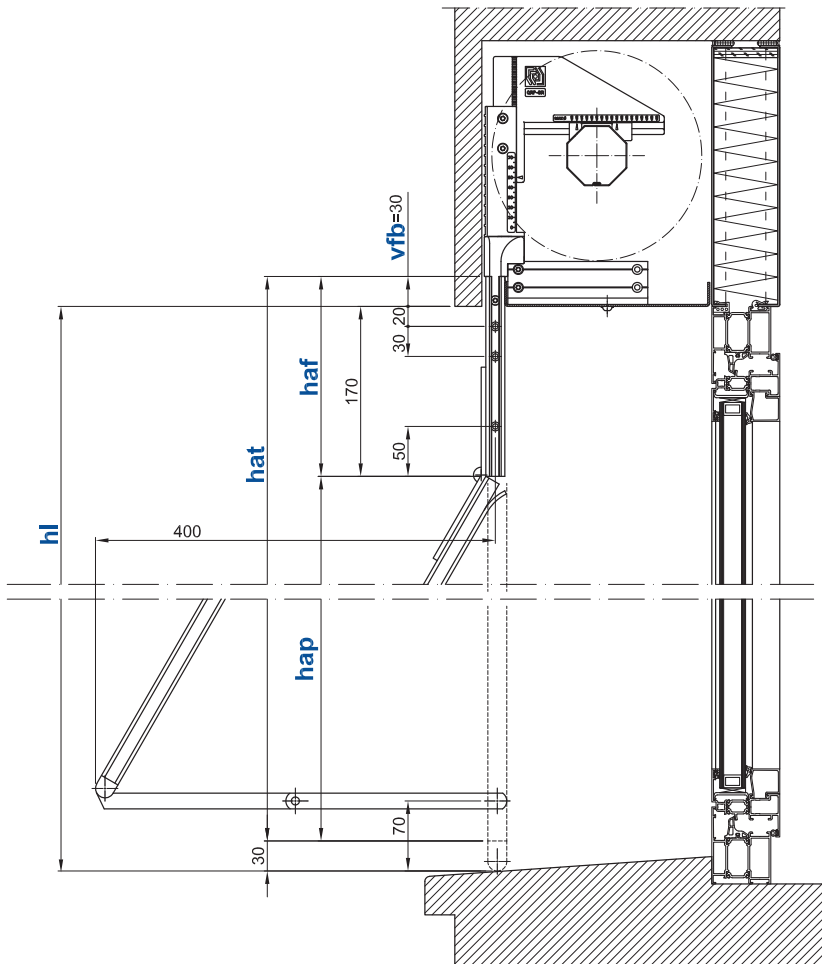


**Manual drive**  
Minimum side space needed



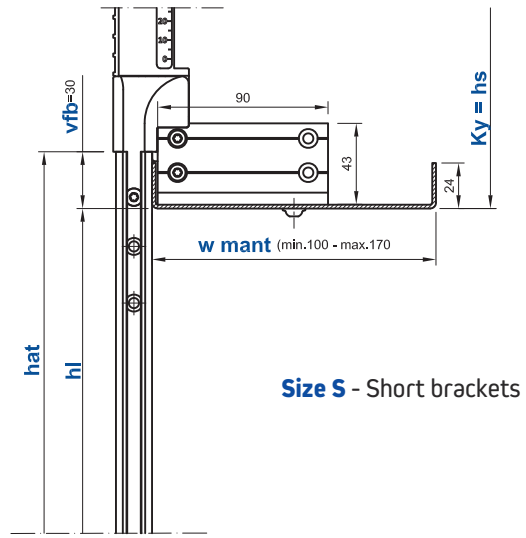


**Standard and lever sliding arm**  
version for traditional shutter box

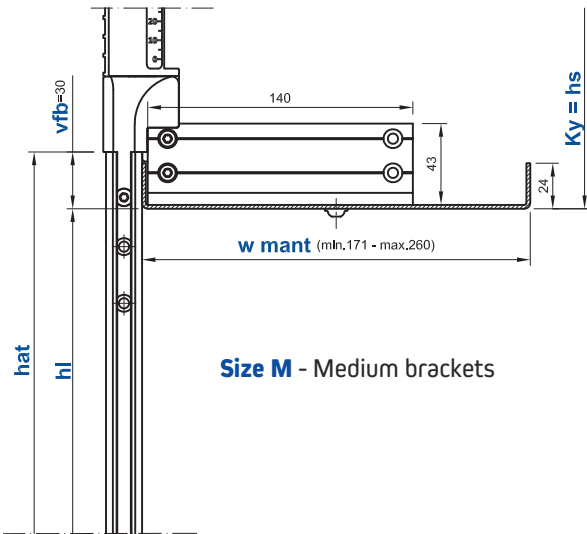


**Standard and lever sliding arm**  
version with bottom cover

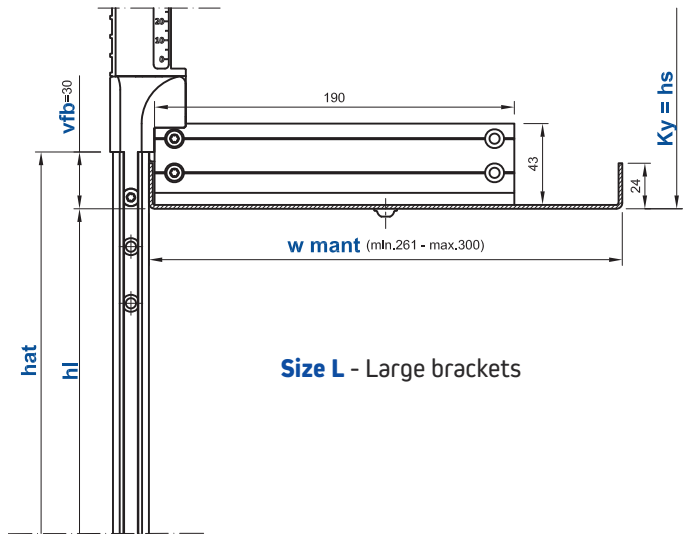
**Size of bottom cover brackets**



**Size S - Short brackets**

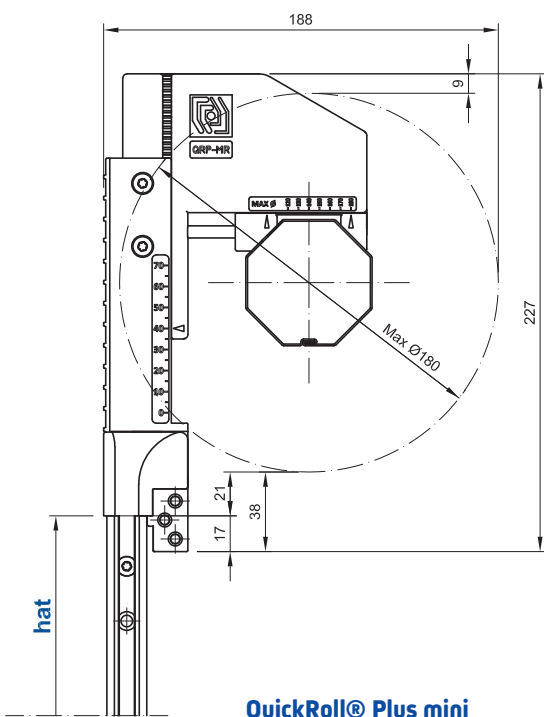


**Size M - Medium brackets**

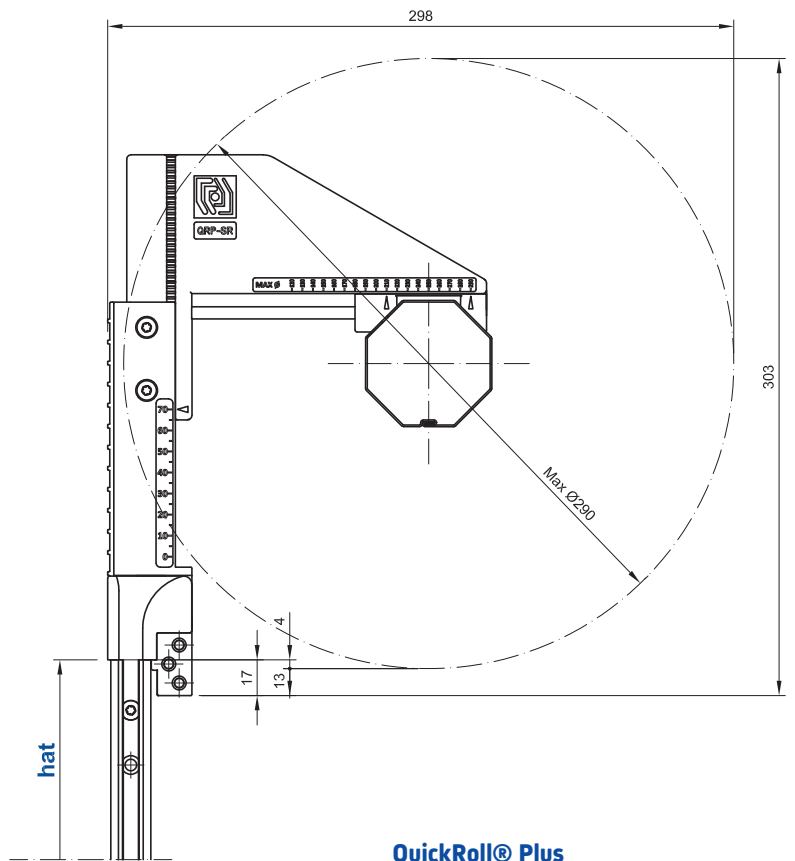


**Size L - Large brackets**

**Maximum winding outer diameter**



**QuickRoll® Plus mini**



**QuickRoll® Plus**

## Technical data

	Lineal®	Regacompact®	Regasicur®
Maximum opening height (hl)	3'500 mm	3'000 mm	3'000 mm
Minimum opening height (hl)			
• without sliding arm for side guides	400 mm	400 mm	400 mm
• with sliding arm for side guides	1'000 mm	1'000 mm	not available
Width of construction (bk)			
• minimum with manual drive	350 mm	350 mm	350 mm
• minimum with motor drive			
- STANDARD	680 mm	680 mm	775 mm
- AUTO	730 mm	730 mm	730 mm
- RTS	725 mm	725 mm	730 mm
- IO	615 mm	615 mm	805 mm
• maximum	(3mm) 4'000 mm (9mm) 3'500 mm	4'200 mm <sup>(2)</sup>	3'000 mm <sup>(3)</sup>
Extension of side guide rails and shutter curtain (vfb)			
• version for traditional shutter box	20÷180 mm	20÷180 mm	20÷180 mm
• version with bottom cover	30 mm	30 mm	30 mm
Distance (g)	12÷95 mm	12÷95 mm	12÷95 mm
Maximum winding outer diameter (D)			
• QuickRoll® Plus mini bracket	180 mm	180 mm	180 mm
• QuickRoll® Plus bracket	290 mm	290 mm	290 mm
Type of bracket/roller shutter			
• QuickRoll® Plus mini bracket (up to hl=)	1'500 mm	2'500 mm	1'500 mm
• QuickRoll® Plus bracket (over hl=)	1'500 mm	2'500 mm	1'500 mm
Width of bottom cover (w mant)			
• QuickRoll® Plus mini	100÷260 mm		
• QuickRoll® Plus	100÷260 mm		
Maximum surface area (bk x hl) (single shutter curtain)			
• with motor drive	12 m <sup>2</sup>	12 m <sup>2</sup>	<sup>(4)</sup> (25mm) 5 m <sup>2</sup> <sup>(4)</sup> (40mm) 6 m <sup>2</sup>
• with manual drive	8 m <sup>2</sup>	8,5 m <sup>2</sup>	(25mm) 3 m <sup>2</sup> (40mm) 3,5 m <sup>2</sup>
Maximum load capacity (other roller shutter)	90 kg <sup>(1)</sup>		
Coupled shutter curtains	not available	not available	not available
Sliding arm for side guide rails			
• Standard type up to bk=	2'000 mm	2'000 mm	not available
• Lever type up to bk=	3'000 mm	3'000 mm	not available

(1) This limit can be achieved only by using reinforced QRPM special side guide rails, available upon request. In all other cases, when using the standard QRP side guide rails, the maximum load capacity is 60 kg.

(2) Only in combination with 70mm ogive roller and reinforcement for bottom bar. In all other cases, maximum BK = 3500 mm.

(3) Only in combination with 70mm ogive roller. With 60 mm octagonal roller the maximum BK = 2500mm.

(4) Only in combination with 70mm ogive roller. With 60 mm octagonal roller, maximum surface area = 3 m<sup>2</sup> (Regasicur 25mm) and 3,5 m<sup>2</sup> (Regasicur 40mm).

		Minimum inner shutter box dimensions (Kx and Ky*)											
		hl	1'000	1'250	1'500	1'750	2'000	2'250	2'500	2'750	3'000	3'250	3'500
Lineal® 3mm	60	D	140	155	170	175	185	190	200	210	215	225	225
		Kx	160	175	190	195	205	210	220	230	235	245	245
		Ky*	232	237	240	242	245	245	248	256	261	268	268
		Y	32,5	37,5	40	42,5	45	45	47,5	50	52,5	55	55
	60	D	140	155	165	175	185	190	200	210	215	220	230
		Kx	160	175	185	195	205	210	220	230	235	240	250
		Ky*	232	237	240	242	245	245	248	256	261	263	271
		Y	32,5	37,5	40	42,5	45	45	47,5	50	52,5	52,5	55
	70	D	150	160	170	175	185	195	200	210	220	230	235
		Kx	170	180	190	195	205	215	220	230	240	250	255
		Ky*	235	237	240	242	245	248	248	256	263	271	276
		Y	35	37,5	40	42,5	45	47,5	47,5	50	52,5	55	57,5
Lineal® 9mm	60	D	150	165	175	180	190	200	210	220	225	235	240
		Kx	170	185	195	200	210	220	230	240	245	255	260
		Ky*	235	240	242	242	245	248	256	263	268	276	278
		Y	35	40	42,5	42,5	45	47,5	50	52,5	55	57,5	57,5
	70	D	155	165	175	185	195	205	215	220	230	235	245
		Kx	175	185	195	205	215	225	235	240	250	255	265
		Ky*	237	240	242	245	248	253	261	263	271	276	283
		Y	37,5	40	42,5	45	47,5	50	52,5	52,5	55	57,5	60

		Minimum inner shutter box dimensions (Kx and Ky*)									
		hl	1'000	1'250	1'500	1'750	2'000	2'250	2'500	2'750	3'000
Regacompact®	60	D	130	135	145	155	155	160	170	175	180
		Kx	150	155	165	175	175	180	190	195	200
		Ky*	230	232	235	237	237	237	240	242	242
		Y	30	32,5	35	37,5	37,5	37,5	40	42,5	42,5
	60	D	120	135	145	150	155	160	170	180	185
		Kx	140	155	165	170	175	180	190	200	205
		Ky*	227	232	235	235	237	237	240	242	245
		Y	27,5	32,5	35	35	37,5	37,5	40	42,5	45
	70	D	130	135	140	155	165	170	175	185	195
		Kx	150	155	160	175	185	190	195	205	215
		Ky*	230	232	232	237	240	240	242	245	248
		Y	30	32,5	32,5	37,5	40	40	42,5	45	47,5

		Minimum inner shutter box dimensions (Kx and Ky*)									
		hl	1'000	1'250	1'500	1'750	2'000	2'250	2'500	2'750	3'000
Regasicur® 25mm	60	D	150	160	175	185	195	200	210	220	230
		Kx	170	180	195	205	215	220	230	240	250
		Ky*	235	237	242	245	248	248	256	263	271
		Y	35	37,5	42,5	45	47,5	47,5	50	52,5	55
	70	D	155	165	170	185	195	205	215	220	230
		Kx	175	185	190	205	215	225	235	240	250
		Ky*	237	240	240	245	248	253	261	263	271
		Y	37,5	40	40	45	47,5	50	52,5	52,5	55
Regasicur® 40mm	60	D	155	165	170	180	190	200	205	215	230
		Kx	175	185	190	200	210	220	225	235	250
		Ky*	237	240	240	242	245	248	253	261	271
		Y	37,5	40	40	42,5	45	47,5	50	52,5	55
	70	D	150	160	175	185	195	200	210	220	225
		Kx	170	180	195	205	215	220	230	240	245
		Ky*	235	237	242	245	248	248	256	263	268
		Y	35	37,5	42,5	45	47,5	47,5	50	52,5	55