



reddot award 2019
winner

NEW DESIGN T38



Pliat[®] CWS

Aluminium stackable roller
shutter for corner windows






reddot award 2019
winner

Plial[®] CWS

Plial[®] CWS (Corner Window Solution) is designed specifically for the darkening of corner windows

1

COMPACT AND FUNCTIONAL

Compared to conventional roller shutters, the 2 slats or 3 slats stacking system ensure optimal use of the lintel space.

2

LOW VISUAL IMPACT OF THE MIDDLE MOUNTING PROFILE FOR SIDE GUIDE RAILS

Thanks to the self-supporting side guide rails, the lateral space that would otherwise be required to accommodate the two adjacent roller brackets is not necessary. In this way the gap between the two central side guides can be eliminated, thus reducing space requirements.

3

FLAT SHUTTER CURTAIN SURFACE

Thanks to the special straight slat geometry, the roller shutter keeps in harmony with the building façade, removing any curved surface.

4

CARE OF THE DETAILS

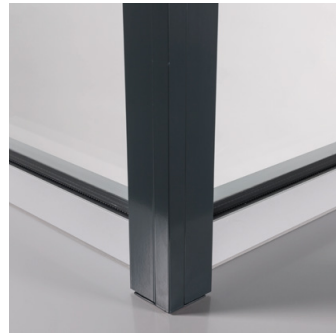
The design and assembly of the middle profile hides any fastening elements.

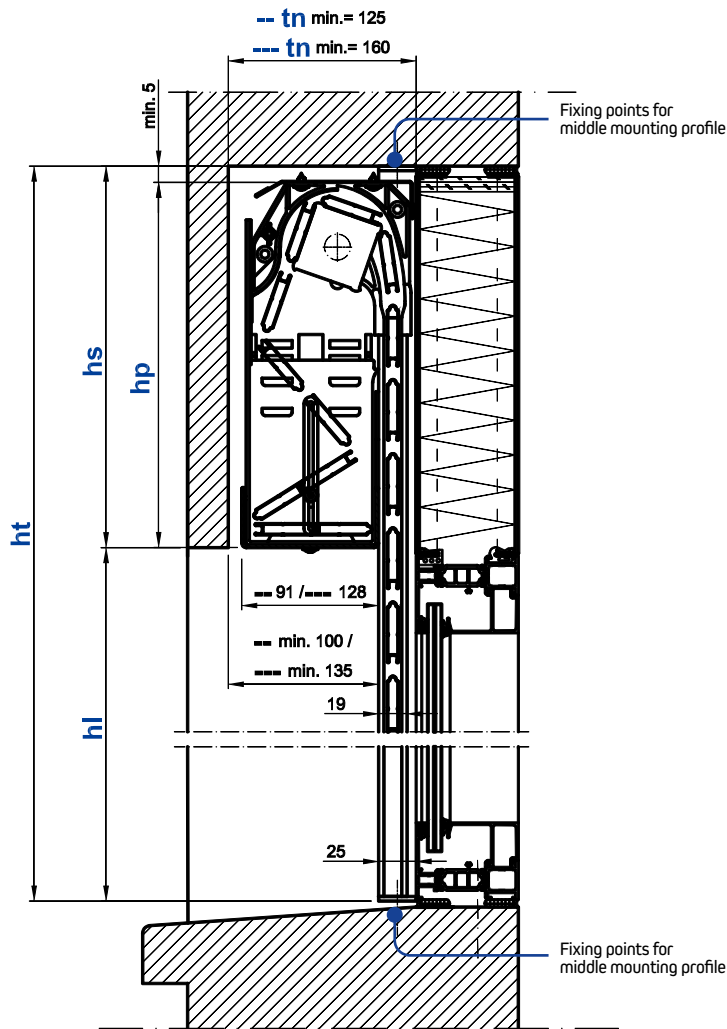
5

AWARD-WINNING, INNOVATIVE AND QUALITY DESIGN

Product winner of the prestigious international design competition **Red Dot Award 2019**.

Made in Switzerland



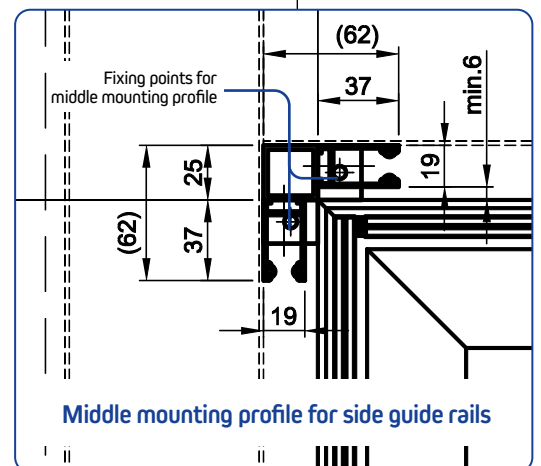
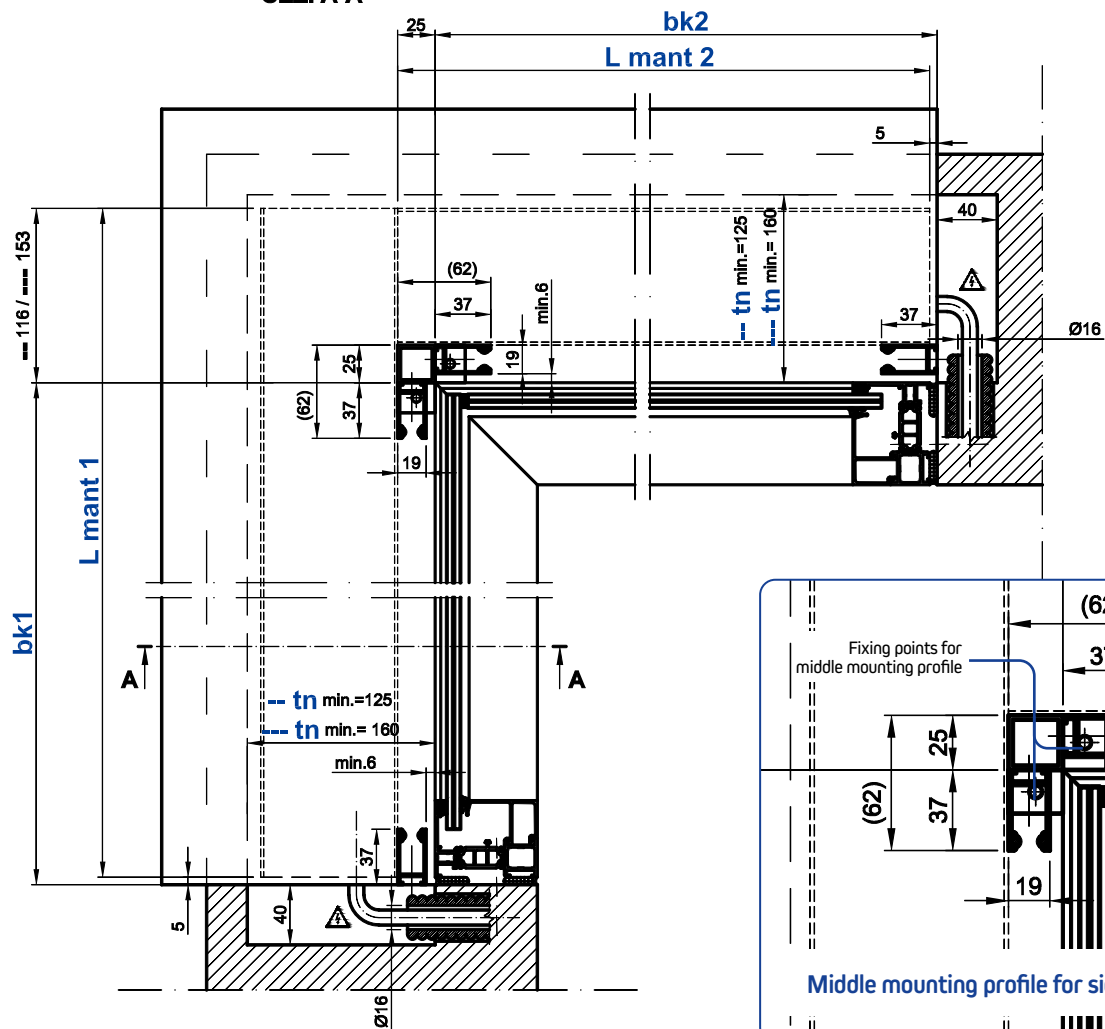


Legend

- 1 roller shutter 1
- 2 roller shutter 2
- bk width of construction
- hl opening height
- hk installation height (hl + hp)
- ht total height (hl + hs)
- hs lintel height
- hp package height
- tn lintel depth
- lmant length of bottom cover
- [- -] two-slats version
- [- - -] three-slats version

Length of bottom covers

- [- -] L mant 1 = bk1 + 111
L mant 2 = bk2 + 20
- [- - -] L mant 1 = bk1 + 148
L mant 2 = bk2 + 20



Technical data

Maximum installation height (hk) 3'000 mm

Maximum opening height (hl) [- -] 2'600 mm
[- - -] 2'680 mm

Minimum opening height (hl) 400 mm

Width of construction (bk)

- minimum with motor
 - STANDARD 580 mm
 - AUTO⁽⁴⁾ 710 mm
 - RTS 640 mm
 - IO 675 mm
- maximum 3'000 mm

Maximum surface area (bk x hk) ⁽¹⁾

- single shutter curtain 7 m²
- coupled shutter curtains 10 m²

Shutter curtain unfolding only inwards
Drive type motor, independent

Coupled shutter curtains ⁽¹⁾

- number of shutter curtains that can be coupled with a single drive 2 o 3 shutter curtains
- middle control side not possible

Weight per m² ⁽¹⁾ approx. 3,5 kg

Minimum lintel dimensions [- -]										
tn	125 mm									
hl	1'090	1'155	1'220	1'360	1'425	1'490	1'590	1'655	1'795	>>
hp ⁽²⁾	230	240	250	260	270	280	290	300	310	>>

hl	1'900	1'965	2'030	2'170	2'270	2'335	2'475	2'540	2'600
hp ⁽²⁾	320	330	340	350	360	370	380	390	400

Minimum lintel dimensions [- - -]										
tn	160 mm									
hl	1'425	1'565	1'630	1'735	1'800	2'015	2'230	2'370	2'435	2'680
hp ⁽²⁾	230	240	250	260	270	280	290	300	310	320

Two-slats version [- -] Three-slats version [- - -] hp = package height tn = lintel depth

- (1) Data refer to the single roller shutter.
- (2) The minimum package height hp includes a tolerance of 5 mm to compensate wall errors. In case of intermediate dimensions, use the next higher hp dimension.
- (3) Standard for three-slats version and from bk width of 2000mm for two-slats version.
- (4) In order to be able to use this type of motor, it is required to install the bottom bar stop brackets or alternatively the bottom bar reinforcement.

Optional on request

- Sheet metal top cover
- Special colours and imitation wood
- Powder coated side guide rails, bottom bar and stop brackets
- Obstacle detection motors⁽⁴⁾ and bidirectional radio motors
- Bottom cover with a height of 100mm ⁽³⁾
- Bottom bar stopper for side guide rails

Wind load resistance

MINERGIE

Width of construction (bk)	1'000	1'500	2'000	3'000
Class	6	6	5	4

Wind load resistance in conformity with VSR technical guidelines (Association of Swiss sun protection and weather suppliers)

Class	0	1	2	3	4	5	6
Wind [m/s]	<9.0	<9.0	11	13	17	21	26
Wind [km/h]	32	32	39	46	60	76	92